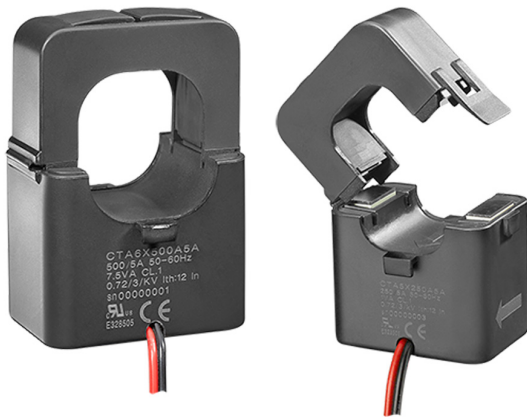


Split core current transformer



Benefits

- **Adaptability and flexibility.** Effective for a wide range of currents, it can be installed in existent applications.
- **Fast installation.** The opening/closing mechanism makes installation fast even in existent applications. The analyzer only requires two cables to be connected per sensor.

Description

Split core current transformer with compact dimensions, suitable for retrofit applications when used in combination with any energy meter with 5 A currents inputs.
It manages primary current from 100 A to 600 A (depends on the model).

Applications

CTA is the ideal solution for quick and easy installation without disconnecting cables during installation. It is indicated for any application (residential, commercial and industrial), especially for retrofitting where installing a solid core current transformer is not possible.

Main features

- 5 A secondary current
- 24 mm hole diameter for primary current up to 300 A
- 36 mm hole diameter for primary current up to 600 A
- Cable length: 1 m

Features

General

| | |
|--------------------------|--|
| Material | PA66 |
| Protection degree | IP20 |
| Secondary output | UL R/C cable, 16AWG (1,3mm ²) Length: 1m; R=13.6mΩ |
| Mounting | Cable |
| Weight (g) | CTA 5X: 165 CTA 6X: 275 |
| Cable diameter | CTA 5X: 24 mm CTA 6X: 36 mm |

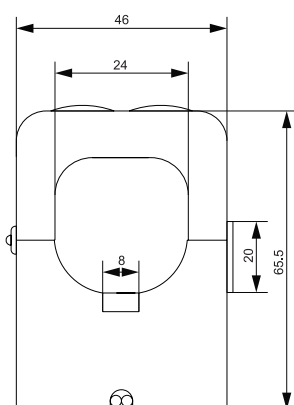


Fig. 1 CTA 5X

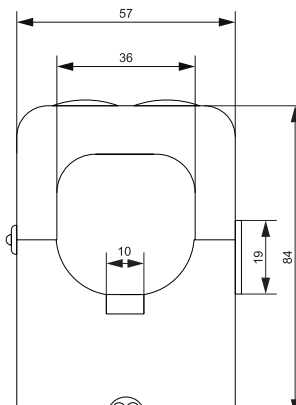
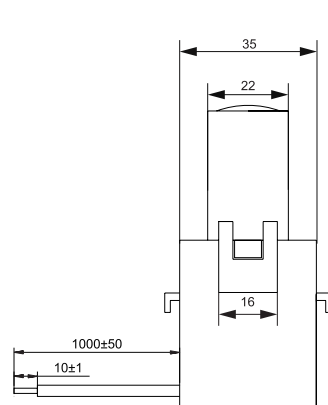
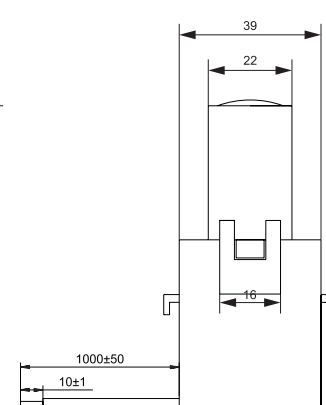


Fig. 2 CTA 6X



Environmental specifications

| | |
|------------------------------|--|
| Operating temperature | -20° to +65°C (-4 to 149 F°) CTA6X 600A: -20° to +50°C (-4 to 122 F°) |
| Storage temperature | -25° to +80°C (-13 to 176 F°) |

UL note: insulation class: A (105), 55 °C rise type at 30°C ambient

Conformity

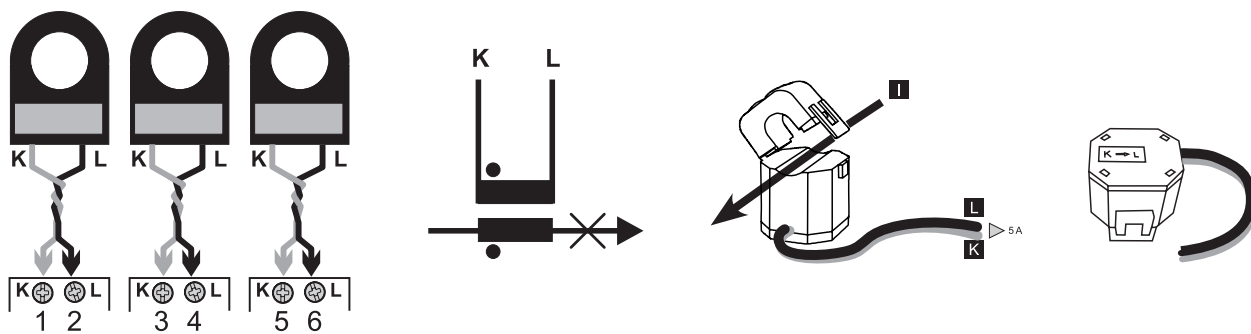
| | |
|------------------|---|
| Approvals | CE C RU US EN 61869-2 |
|------------------|---|

Electrical specifications

| | |
|--|---|
| Rated secondary current | 5 A |
| Frequency | 50/60 Hz |
| Rated system voltage | 600 V ac |
| Rated insulation level | 0.72kV ac, dielectric strength 3kVac for 1min |
| Insulation class | B |
| Short time current rating I _{th} I _{dyn} | 12 x I _n 2,5 x I _{th} |

| Model | Primary current | Accuracy (EN61869-2) | Burden RL |
|-------------------------|-----------------|----------------------|-----------|
| CTA 5X $\varnothing 24$ | 100 A | Class 3 | 1 VA |
| | 150 A | Class 3 | 1 VA |
| | 200 A | Class 3 | 1 VA |
| | 250 A | Class 1 | 1 VA |
| | 300 A | Class 1 | 2.5 VA |
| CTA 6X $\varnothing 36$ | 200 A | Class 3 | 1 VA |
| | 300 A | Class 1 | 2.5 VA |
| | 400 A | Class 1 | 5 VA |
| | 500 A | Class 1 | 7.5 VA |
| | 600 A | Class 1 | 10 VA |

Connection Diagrams



References

CTA 5A

Enter the code, replacing the symbol with the selected option (e.g.: CTA **5X 100A** 5A).

| Code | Options | Description |
|--------------------------|----------|---------------------------|
| C | - | |
| T | - | |
| A | - | |
| <input type="checkbox"/> | 5X 100 A | Model and primary current |
| | 5X 150 A | |
| | 5X 200 A | |
| | 5X 250 A | |
| | 5X 300 A | |
| | 6X 200 A | |
| | 6X 300 A | |
| | 6X 400 A | |
| | 6X 500 A | |
| 6X 600 A | | |
| 5 A | - | Secondary current |

Further reading

| Information | Document | Where to find it |
|--------------------|----------------------------|--|
| Instruction manual | Instruction manual : CTA_X | www.productselection.net |

CARLO GAVAZZI compatible components

| Purpose | Component name/code key | Notes |
|---|---|-------|
| Measure and display consumption of connected circuits | EM24, EM210, EM330, ET330, WM20, WM30, WM40, WM50 | - |



COPYRIGHT ©2019
Content subject to change. Download the PDF: www.productselection.net